

Milestone #1 Agenda

- 1 What is an ATP? Why have an ATP?
- 2 Sonoma County ATP Scope & Approach
- 3 Vision & Goals
- 4 Advisory Body Role
- 5 Schedule
- 6 Local Conditions Discussion
- 7 Questions



Sonoma Countywide Active Transportation Plan

September 12, 2023

Active Transportation Plan (ATP)

Active transportation refers to “human-powered” modes of travel, like walking, biking, or using mobility devices.



What is an ATP?

Focuses on increasing access to active transportation modes by planning for infrastructure projects and supportive programs.

Why have an ATP?

Enables changes to enhance people's quality of life.

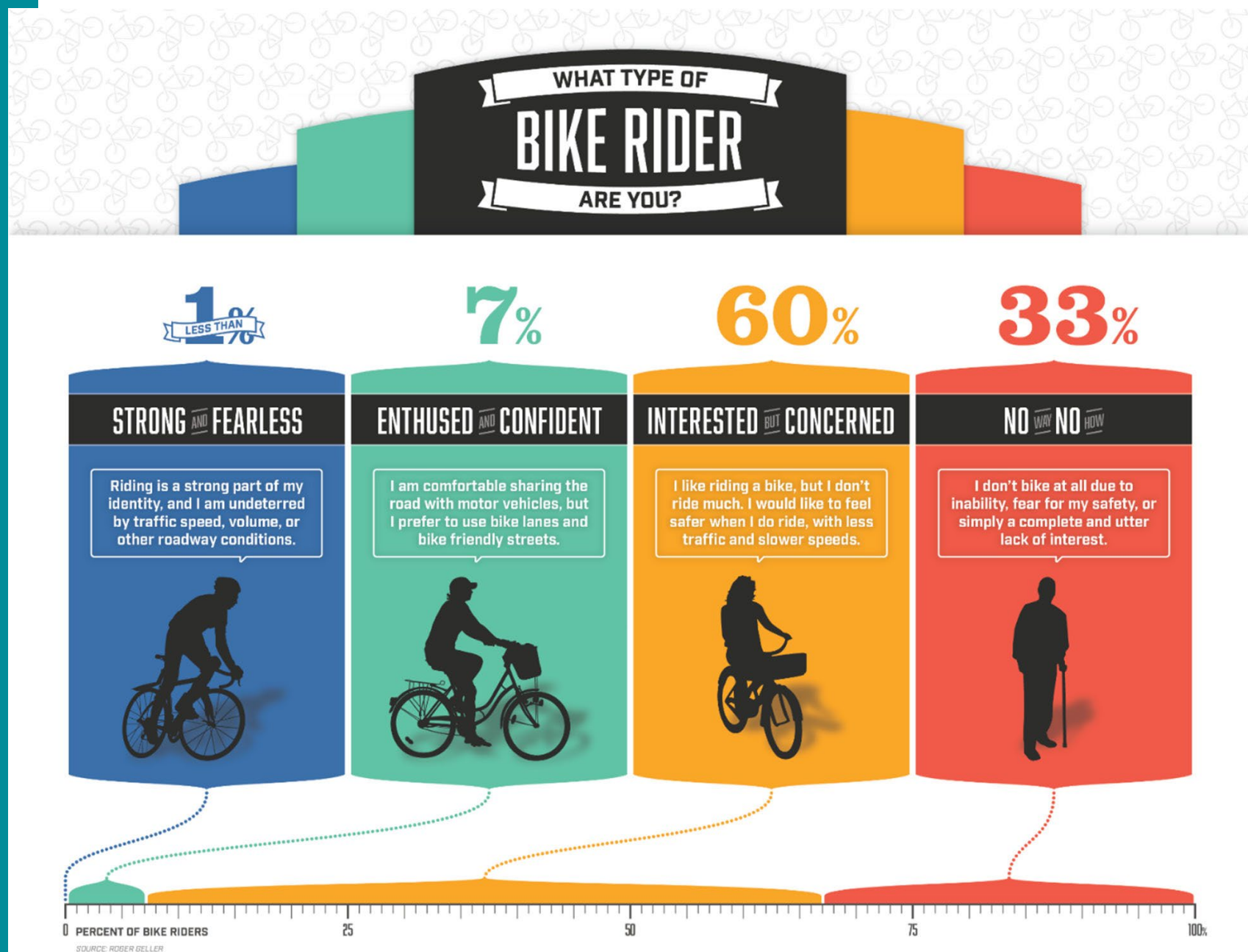
Allows for prioritized and coordinated improvements.

Meet eligibility requirements for grant funding.

Guides public and private investment.

All Ages & Abilities

Use analysis techniques like bicycle level of traffic stress to identify needs and opportunities regionally and locally



Incorporate Industry Best Practices



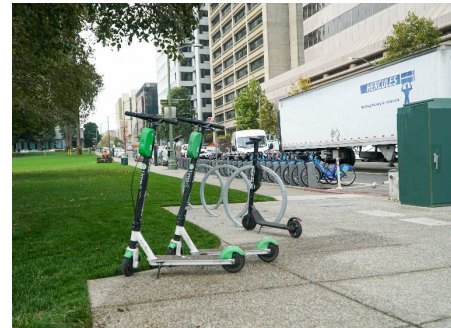
On-Street Bikeway Selection & Design Attributes



Multiuse Paths & Bike Highways



Street Crossings & Intersections



Micromobility & Emerging Technology



Quick Build Projects



Amenities to Improve User Experience

Bicycle Facility Toolbox



Possible Low-Stress Facilities



Class III - Bike Route



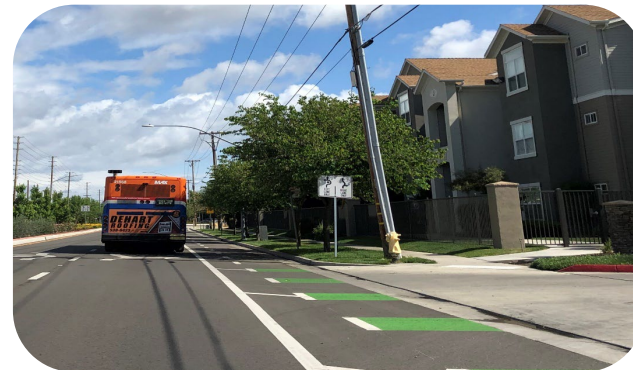
Class II - Bike Lane



Class IV - Separated Bike Lane



Class IIIB - Bike Boulevard



Class IIB -Buffered Bike Lane



Class I - Shared-Use Path



Pedestrian Facilities Toolbox



Sidewalk



Crosswalk



Rectangular Rapid
Flashing Beacon



Curb Extension



Leading Pedestrian Interval



Pedestrian-Hybrid Beacon

Programas de tarifas con descuento

Todos

- Descuentos en pases – ofertas aprox. 30% de descuento para pasajeros frecuentes
- 10% de descuento con Clipper

Mayores/ADA y Jóvenes

- 50% de descuento en tarifas en efectivo y Clipper (\$1) y pases
- Tarifa plana de \$3 en Connect

Programas de bajos ingresos

- Adultos: 50% de descuento sobre la tarifa en efectivo (Clipper START)
- Jóvenes: Pase para Joven – Gratis!
- Personas de la tercera edad/ADA: Asistencia para tarifas de bajos ingresos (LIFA) + Pase de autobús local gratuito de Marín Transit



Community Engagement



Funding & Implementation

Identify priorities for implementation

Align federal, state, regional funding opportunities



ABOUT THE SUBAREA

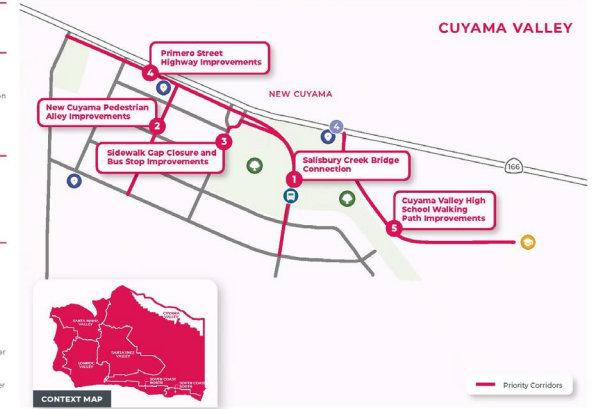
Cuyama Valley

EXISTING CONDITIONS AND RECOMMENDATIONS OVERVIEW

Communities include **Cuyama** and **New Cuyama**



- Existing Bike Facility**
No
- Transit**
Cuyama Shuttle 0
Cuyama Transit provides service between **New Cuyama** and **Santa Maria**. The deviated fixed-routes service allows passengers to select their own pick-up and drop-off locations.
- Schools**
2
Cuyama Valley Elementary
Cuyama Valley High
- Destinations**
10
Cuyama Valley Elementary
Cuyama Valley High
Cuyama Imagination Garden
Richardson Park
Blue Sky Center
Cuyama Library
Cuyama Valley Family Resource Center
Cuyama Buckhorn Hotel/Restaurant
Joseph Center/Adapted Center
New Cuyama Community Health Center



CUYAMA VALLEY PROJECT 1

Salisbury Creek Bridge Connection

Richardson Park to Cuyama Valley Family Resource Center

FUNDING OPPORTUNITIES

- Access to Parks
- Access to Recreation
- Access to Schools
- Access to Transit
- Located in DAC
- Key Barrier/Gap Closure
- Collision History

Recommendations

- Pedestrian/Bike Bridge**
Add pedestrian/bicycle bridge to connect Richardson Park to the Cuyama Imagination Garden and the Cuyama Valley Family Resource Center.
- Multi-Use Path**
Add shade trees and path improvements to connect to the existing paved path.

PROJECT AREA FEATURES



Sonoma County & Local ATPs

Elements of each task
inform regional and
local plans

Scope of Work



Task 1:
Establishing
Foundation



Task 2:
Technical
Analysis



Task 3:
Engagement &
Coordination



Task 4:
Projects &
Programs



Task 5:
Funding &
Implementation



Task 6:
Draft &
Final Plans



Task 7:
Board Review
& Approval

Anticipated Outline for the Local Plans

- » Introduction
- » Community Profile & Walking, Biking & Rolling Today
- » Community & Stakeholder Engagement
- » Vision, Goals & Objectives
- » Advancing Active Transportation
 - Infrastructure Improvements
 - Programs, Policies & Practices
- » Implementation: Local Considerations
- » Appendix (Reference Countywide Plan)
- » Glossary (Reference Countywide Plan)



Anticipated Outline for the Countywide Plan

VOLUME I: WALKING, BIKING, ROLLING ACROSS THE COUNTY

- » Cover
- » Acknowledgments
- » Table of Contents
- » Executive Summary
- » Introduction
- » Countywide Context & Conditions Today
- » Community & Stakeholder Engagement
- » Vision, Goals & Objectives
- » Countywide Priorities
 - Regional Routes
 - Countywide Network & Project List
 - Programs, Policies & Practices

VOLUME II: LOCAL COMMUNITY PLANS

- » Local Active Transportation Plans

VOLUME III: IMPLEMENTATION STRATEGY

- » Cost Estimates
- » Funding

VOLUME IV: APPENDICES & GLOSSARY

Anticipated Outline for the Local Plans

- » Introduction
- » Community Profile & Walking, Biking & Rolling Today
- » Community & Stakeholder Engagement
- » **Vision, Goals & Objectives**
- » Advancing Active Transportation
 - Infrastructure Improvements
 - Programs, Policies & Practices
- » Implementation: Local Considerations
- » Appendix (Reference Countywide Plan)
- » Glossary (Reference Countywide Plan)



Anticipated Outline for the Countywide Plan

VOLUME I: WALKING, BIKING, ROLLING ACROSS THE COUNTY

- » Cover
- » Acknowledgments
- » Table of Contents
- » Executive Summary
- » Introduction
- » Countywide Context & Conditions Today
- » Community & Stakeholder Engagement
- » **Vision, Goals & Objectives**
- » Countywide Priorities
 - Regional Routes
 - Countywide Network & Project List
 - Programs, Policies & Practices

VOLUME II: LOCAL COMMUNITY PLANS

- » Local Active Transportation Plans

VOLUME III: IMPLEMENTATION STRATEGY

- » Cost Estimates
- » Funding

VOLUME IV: APPENDICES & GLOSSARY

COUNTYWIDE VISION STATEMENT - DRAFT

The transportation system is safe and inviting for people of all ages and abilities to walk, bike, and roll for everyday transportation and recreation, by providing a continuous and interconnected network linking daily activities and housing, and supported by programs and policies that encourage walking, biking, and rolling.

COUNTYWIDE GOALS AND DESCRIPTIONS - *DRAFT*

Connected and Reliable

Deliver a continuous network that allows people of all ages and abilities to use a variety of transportation types easily, affordably, and dependably.

Safe and Well-Maintained

Create and sustain a high-quality and low-stress active transportation network. Employ Vision Zero and Safety Plan policies and strategies to advance this goal.

Community Oriented and Place-Based

Tailor projects to urban, suburban, and rural communities, that support a diversity of uses and users and create community through active transportation.

Local Focus



What from the Countywide Vision and Goals resonates with your community? What is missing for your community?



Countywide & Local Coordination

Committee Coordination

- Regular Updates to CBPAC
- Milestone Updates to Local and Regional Bodies

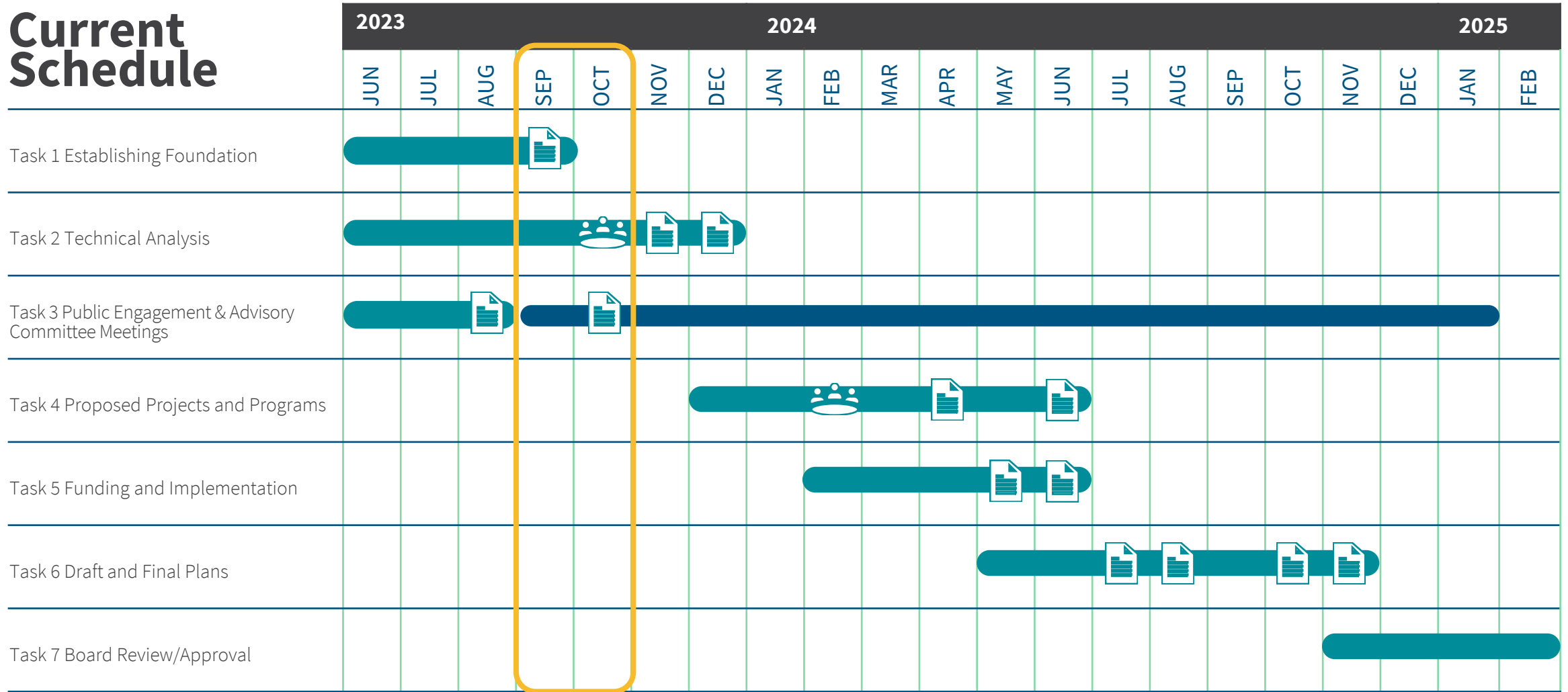
- Regular Coordination through SCTA's CBPAC
- Milestone updates to established SCTA/RCPA committees
- Milestone updates to local bicycle and pedestrian advisory bodies
- Board/council presentations

Countywide & Local Coordination

City of Sebastopol:
Engagement &
Planning Commission
Coordination

Topics	Estimated Timeframes	
	Planning Commission	Community Engagement
Draft Existing Conditions, Needs, and Opportunities	September 12, 2023	Sept.-Nov. 2023
Draft Project, Policies, Programs	April 9, 2024	Spring/Summer 2024
Public Draft Plan	November 12, 2024	Fall/Winter 2024

Current Schedule



LEGEND

WORK PERIOD



MEETINGS



TASK DELIVERABLE



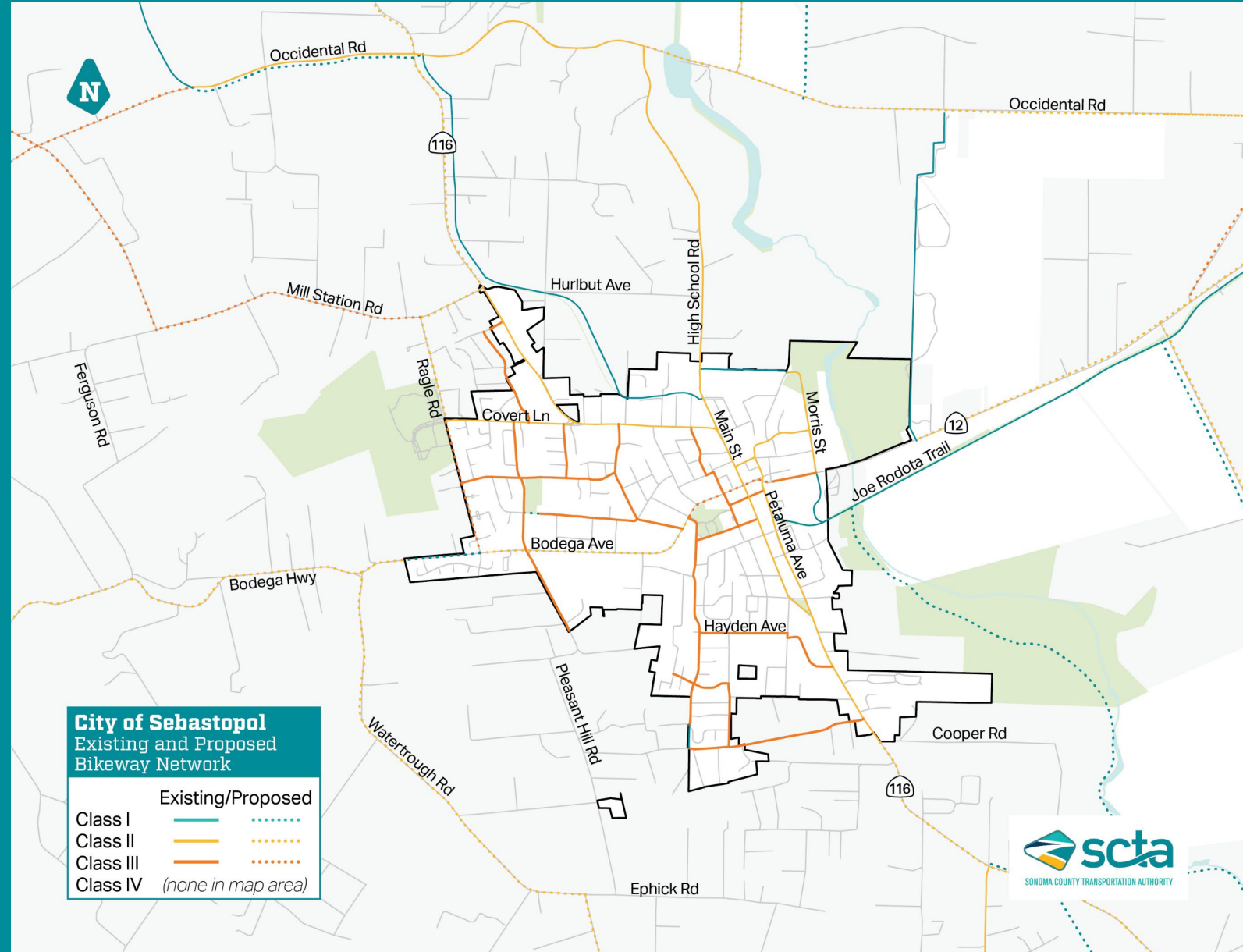
WORKSHOP



Existing & Planned Facilities

Process

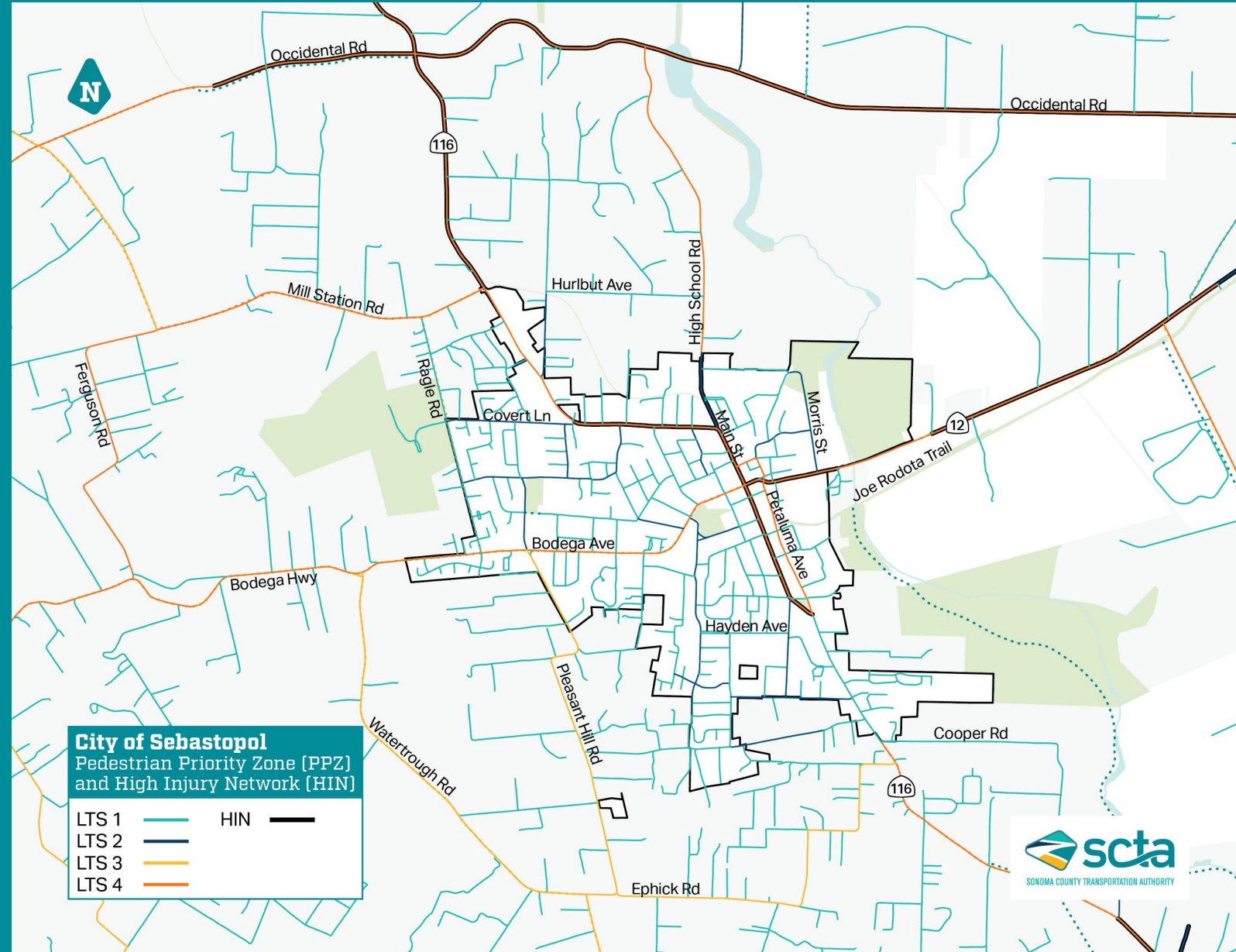
1. Establishing Foundation
2. Technical Analysis
3. Engagement & Coordination
4. Projects & Programs
5. Funding & Implementation
6. Draft & Final Plans
7. Board Review & Approval



Preliminary LTS Results

Process

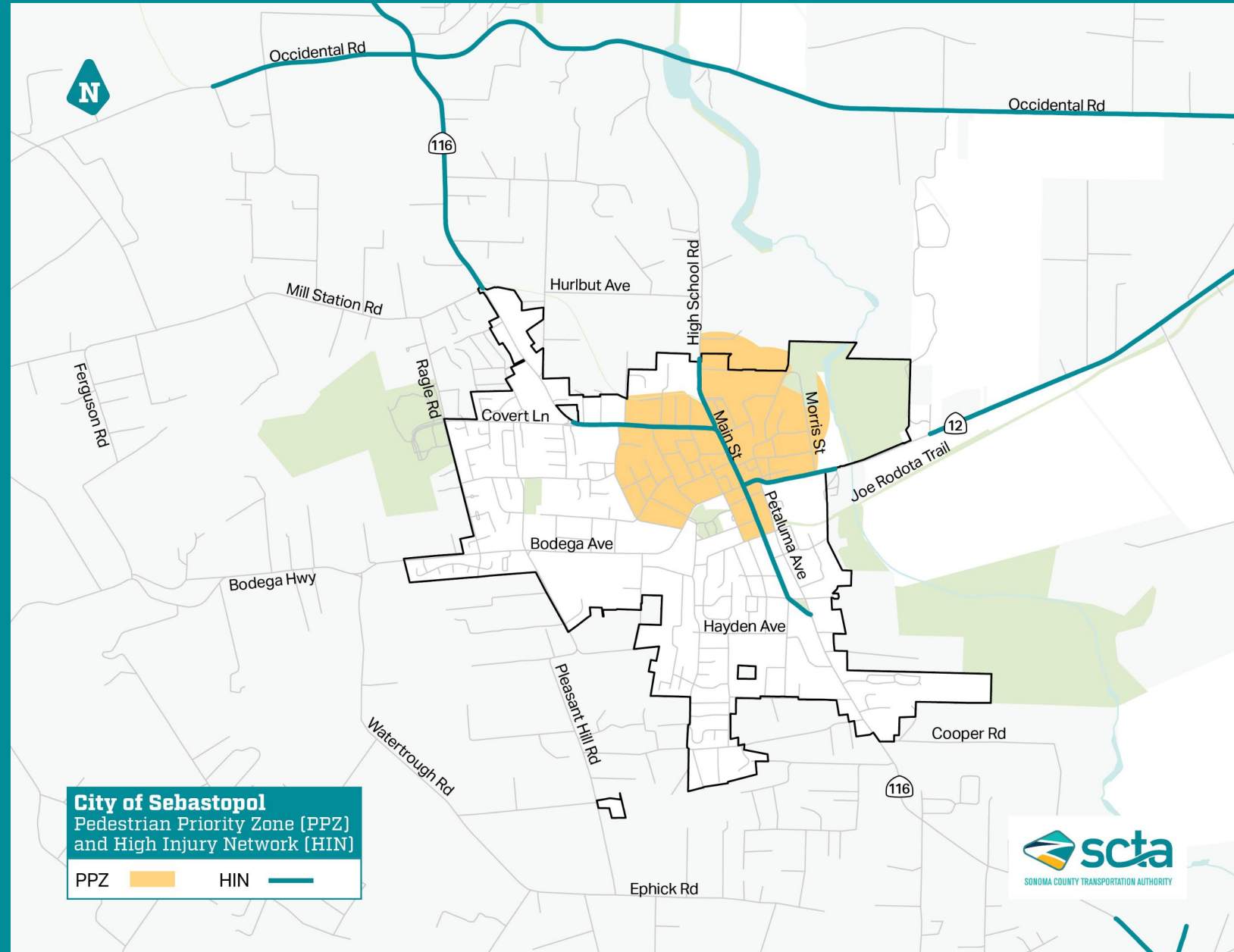
1. Establishing Foundation
2. **Technical Analysis**
3. Engagement & Coordination
4. Projects & Programs
5. Funding & Implementation
6. Draft & Final Plans
7. Board Review & Approval



Preliminary Priority Pedestrian Zone

Process

1. Establishing Foundation
2. **Technical Analysis**
3. Engagement & Coordination
4. Projects & Programs
5. Funding & Implementation
6. Draft & Final Plans
7. Board Review & Approval





Process

1. Establishing Foundation
2. Technical Analysis
- 3. Engagement & Coordination**
4. Projects & Programs
5. Funding & Implementation
6. Draft & Final Plans
7. Board Review & Approval

Community Engagement Questions

- What are your experiences with active transportation today?
- What do you think are the needs, barriers, or opportunities for active transportation travel today and in the future?
 - We are looking for location-specific ideas, about existing or future facilities, as well as programmatic solutions

SCTA Project webpage:

<https://scta.ca.gov/planning/countywide-active-transportation-plan/>

Project Website and Survey coming soon!



Questions?