

REFERENCE DATA

R1	RECORD OF SURVEY, 745 MAPS 10-11, S.C.R.	R12	DN 2012-068170, S.C.R.
R5	DN 2012-068163, S.C.R.	R13	DN 2012-068171, S.C.R.
R6	DN 2012-068164, S.C.R.	R14	DN 2012-068172, S.C.R.
R7	DN 2012-068165, S.C.R.	R15	DN 2012-068173, S.C.R.
R8	DN 2012-068166, S.C.R.		
R9	DN 2012-068167, S.C.R.		
R10	DN 2012-068168, S.C.R.		

RECORD OF SURVEY  
745 MAPS  
10-11, S.C.R.

CURVE TABLE

CURVE	LENGTH	RADIUS	DELTA
C1	16.25' (M,R1&R5)	25.00' (M,R1&R5)	37°14'01" (37°15'10" R1&R5)
C2	30.74' (M,R1&R6)	27.50' (M,R1&R6)	64°02'11" (M,R1&R6)
C9	30.74' (M,R1&R7)	27.50' (M,R1&R7)	64°02'11" (M,R1&R7)
C10	36.69' (M,R1&R11)	330.00' (M,R1&R11)	6°22'15" (M,R1&R11)

CURVE TABLE

CURVE	LENGTH	RADIUS	DELTA
C11	12.72' (M,R1&R11)	25.00' (M,R1&R11)	29°08'39" (M,R1&R11)
C12	42.32' (M,R1&R10)	27.50' (M,R1&R10)	88°10'21" (M,R1&R10)
C13	7.22' (M,R1&R10)	4.50' (M,R1&R10)	91°52'17" (M,R1&R10)
C14	7.22' (M,R1&R9)	4.50' (M,R1&R9)	91°52'17" (M,R1&R9)
C15	42.32' (M,R1&R9)	27.50' (M,R1&R9)	88°10'21" (M,R1&R9)
C16	31.62' (M,R1)	330.00' (M,R1)	5°29'24" (M,R1)

LINE TABLE

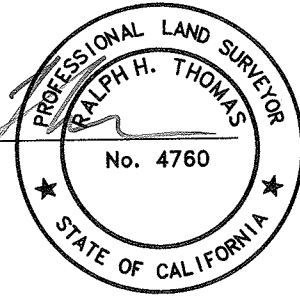
LINE	LENGTH	DIRECTION
L6	3.50' (M,R1&R15)	N84°38'03"E (M,R1&R15)
L7	5.91' (M,R1&R15)	S10°10'20"W (M,R1&R15)
L8	25.00' (M,R1&R15)	S12°50'57"E (M,R1&R15)
L9	0.95' (M,R1&R15)	S77°09'03"W (M,R1&R15)
L10	7.98' (M,R1&R9)	N10°09'00"W (M,R1&R9)
L11	12.31' (M,R1)	N85°05'40"E (M,R1)
L12	10.46' (M,R1)	S85°05'40"W (M,R1)
L13	10.76' (M,R10&R12)	S79°51'00"W (M,R10) (S79°55'24"-R12)
L14	10.00' (M,R10&R12)	S79°51'00"W (M,R10&R12)
L15	3.77' (M,R10&R12)	S79°51'00"W (M,R10&R12)
L16	9.60' (M,R13&R14)	S11°03'30"W (M,R13&R14)
L17	24.02' (M,R1)	S77°41'17"W (M,R1)

SURVEYOR'S STATEMENT

THIS MAP CORRECTLY REPRESENTS A SURVEY MADE BY ME OR UNDER MY DIRECTION IN CONFORMANCE WITH THE REQUIREMENTS OF THE PROFESSIONAL LAND SURVEYORS' ACT AT THE REQUEST OF HIGHWAY PARTNERS, LLC. IN MARCH, 2013.

DATE 5/23/2013

*Ralph H. Thomas*  
RALPH H. THOMAS  
P.L.S. NO. 4760

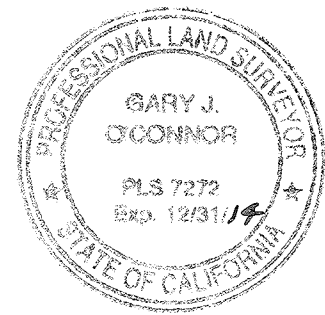


NOTES

- ALL DISTANCES AND DIMENSIONS ARE SHOWN IN FEET AND DECIMALS THEREOF.
- RECORD TITLE INTEREST AND ENCUMBRANCES WERE BASED ON A TITLE REPORT PREPARED BY FIRST AMERICAN TITLE COMPANY, DATED MAY 02, 2012.
- THE ENGINEER DOES NOT ASSUME LIABILITY FOR TITLE SEARCH.
- ALL TIES TO FOUND MONUMENTS ARE PERPENDICULAR UNLESS OTHERWISE NOTED.

COUNTY SURVEYOR'S STATEMENT

THIS MAP HAS BEEN EXAMINED IN ACCORDANCE WITH SECTION 8766 OF THE PROFESSIONAL LAND SURVEYORS' ACT THIS DAY 28 OF MAY, 2013



*Gary O'Connor*  
COUNTY SURVEYOR  
COUNTY OF SONOMA  
STATE OF CALIFORNIA

DEPUTY COUNTY SURVEYOR

COUNTY RECORDER'S CERTIFICATE

FILED THIS 28<sup>th</sup> DAY OF May, 2013 AT PM 12:53 IN BOOK 757 OF MAPS, AT PAGE(S) 43-44 AT THE REQUEST OF THE COUNTY SURVEYOR.

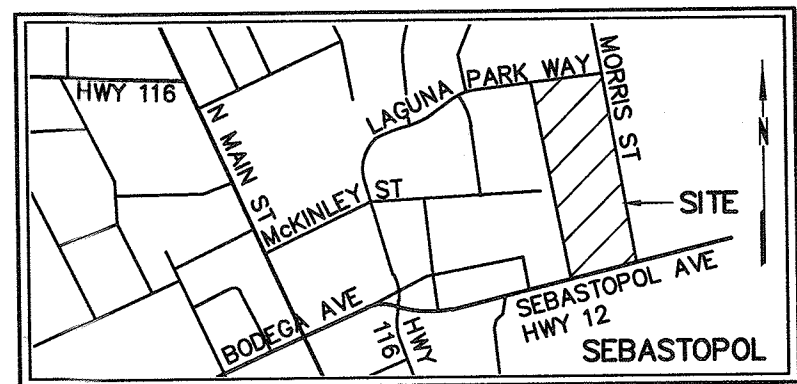
FEE \$ 11.00

*William F. Rousseau*  
COUNTY RECORDER  
COUNTY OF SONOMA  
STATE OF CALIFORNIA

DOCUMENT NO. 2013054487 BY *Joni Jones*

LEGEND:

- EXTERIOR BOUNDARY
- INTERIOR LOT LINES
- FOUND 2" BRASS DISK IN MONUMENT WELL WITH PUNCH MARK
- SET 1/2" IRON PIPE, TAGGED LS 4760
- ⊠ SET RIVET AND TAG, TAGGED LS 4760
- SET MAG NAIL AND WASHER, TAGGED LS 4760
- DN DOCUMENT NUMBER
- S.C.R. SONOMA COUNTY RECORDS
- M MEASURED
- ( ) RECORD DATA



APN 004-750-001, 002, 023 THRU 036

RECORD OF SURVEY

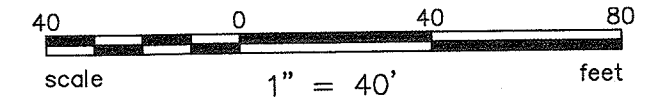
OF THE LANDS OF HIGHWAY PARTNERS, LLC. & SEBASTOPOL INDUSTRIAL PARK, LLC. CREATED UNDER LOT LINE ADJUSTMENTS AS DESCRIBED IN THOSE DOCUMENT NO.'S; 2012-068160, 2012-068161, 2012-068162, 2012-068163, 2012-068164, 2012-068165, 2012-068166, 2012-068167, 2012-068168, 2012-068169, 2012-068170, 2012-068171, 2012-068172, 2012-068173, SONOMA COUNTY RECORDS

CITY OF SEBASTOPOL,  
COUNTY OF SONOMA,  
STATE OF CALIFORNIA  
APRIL 2013

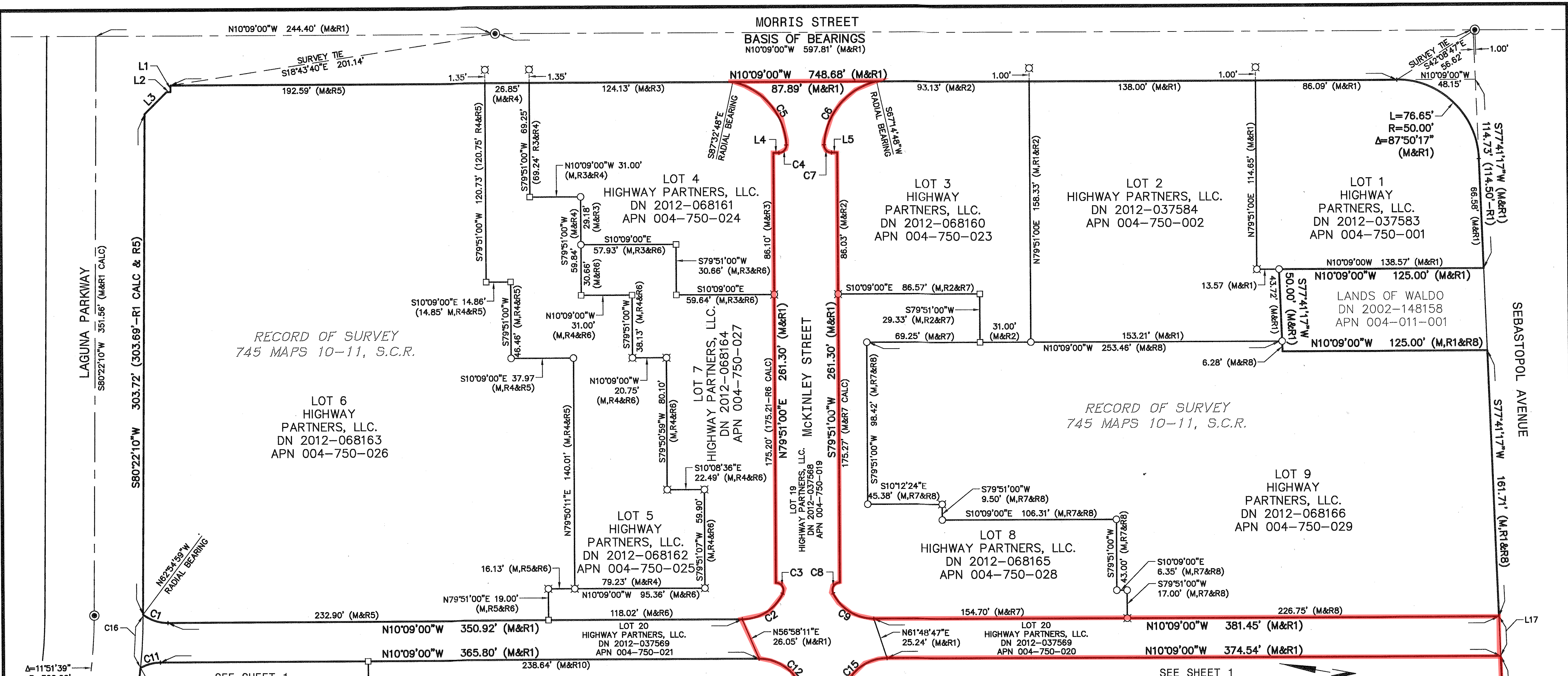


ENGINEERS / SURVEYORS / PLANNERS  
325 TESCONI CIRCLE SANTA ROSA, CA 95401  
(707) 583-8500 FAX: (707) 583-8539

BASIS OF BEARING:  
BETWEEN FOUND 2" BRASS DISKS IN MONUMENT WELL ON MORRIS STREET, AS SHOWN ON THAT RECORD OF SURVEY FILED IN BOOK 745 OF MAPS AT PAGES 10-11, AS N10°09'00"W (SHOWN HEREON).







NOTES  
 Δ=11°51'39"  
 R=300.00'  
 L=62.10'  
 / (M&R1)

ALL DISTANCES AND DIMENSIONS ARE SHOWN IN FEET AND DECIMALS THEREOF.  
 RECORD TITLE INTEREST AND ENCUMBRANCES WERE BASED ON A TITLE REPORT PREPARED BY FIRST AMERICAN TITLE COMPANY, DATED MAY 02, 2012.  
 THE ENGINEER DOES NOT ASSUME LIABILITY FOR TITLE SEARCH.  
 ALL TIES TO FOUND MONUMENTS ARE PERPENDICULAR UNLESS OTHERWISE NOTED.

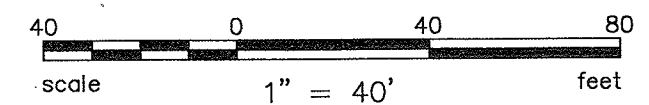
- LEGEND:
- EXTERIOR BOUNDARY
  - INTERIOR LOT LINES
  - ⊙ FOUND 2" BRASS DISK IN MONUMENT WELL WITH PUNCH MARK
  - SET 1/2" IRON PIPE, TAGGED LS 4760
  - ⊠ SET RIVET AND TAG, TAGGED LS 4760
  - SET MAG NAIL AND WASHER, TAGGED LS 4760
  - DN DOCUMENT NUMBER
  - S.C.R. SONOMA COUNTY RECORDS
  - M MEASURED
  - ( ) RECORD DATA

CURVE TABLE			
CURVE	LENGTH	RADIUS	DELTA
C1	16.25' (M,R1&R5)	25.00' (M,R1&R5)	37°14'01" (37°15'10" R1&R5)
C2	30.74' (M,R1&R6)	27.50' (M,R1&R6)	64°02'11" (M,R1&R6)
C3	9.11' (M,R1&R6)	4.50' (M,R1&R6)	115°57'49" (M,R1&R6)
C4	7.32' (M,R1&R3)	4.50' (M,R1&R3)	93°08'21" (M,R1&R3)
C5	53.79' (M,R1&R3)	41.50' (M,R1&R3)	74°15'27" (M,R1&R3)
C6	53.79' (M,R1&R2)	41.50' (M,R1&R2)	74°15'27" (M,R1&R2)
C7	7.32' (M,R1&R2)	4.50' (M,R1&R2)	93°08'21" (M,R1&R2)
C8	9.11' (M,R1&R7)	4.50' (M,R1&R7)	115°57'49" (M,R1&R7)
C9	30.74' (M,R1&R7)	27.50' (M,R1&R7)	64°02'11" (M,R1&R7)
C11	12.72' (M,R1&R11)	25.00' (M,R1&R11)	29°08'39" (M,R1&R11)
C12	42.32' (M,R1&R10)	27.50' (M,R1&R10)	88°10'21" (M,R1&R10)
C15	42.32' (M,R1&R9)	27.50' (M,R1&R9)	88°10'21" (M,R1&R9)
C16	31.62' (M&R1)	330.00' (M&R1)	5°29'24" (M&R1)

- REFERENCE DATA
- R1 RECORD OF SURVEY, 745 MAPS 10-11, S.C.R.
  - R2 DN 2012-068160, S.C.R.
  - R3 DN 2012-068161, S.C.R.
  - R4 DN 2012-068162, S.C.R.
  - R5 DN 2012-068163, S.C.R.
  - R6 DN 2012-068164, S.C.R.
  - R7 DN 2012-068165, S.C.R.
  - R8 DN 2012-068166, S.C.R.
  - R10 DN 2012-068168, S.C.R.
  - R11 DN 2012-068169, S.C.R.

LINE TABLE		
LINE	LENGTH	DIRECTION
L1	3.97' (M,R1&R5)	S79°51'00"W (M,R1&R5)
L2	2.40' (M,R1&R5)	N10°09'00"W (M,R1&R5)
L3	19.08' (M,R1&R5)	N54°53'25"W (M,R1&R5)

LINE TABLE		
LINE	LENGTH	DIRECTION
L4	3.44' (M,R1&R3)	S10°09'00"E (M,R1&R3)
L5	3.44' (M,R1&R2)	S10°09'00"E (M,R1&R2)
L17	24.02' (M&R1)	S77°41'17"W (M&R1)



### RECORD OF SURVEY

OF THE LANDS OF HIGHWAY PARTNERS, LLC. & SEBASTOPOL INDUSTRIAL PARK, LLC. CREATED UNDER LOT LINE ADJUSTMENTS AS DESCRIBED IN THOSE DOCUMENT NO'S; 2012-068160, 2012-068161, 2012-068162, 2012-068163, 2012-068164, 2012-068165, 2012-068166, 2012-068167, 2012-068168, 2012-068169, 2012-068170, 2012-068171, 2012-068172, 2012-068172, SONOMA COUNTY RECORDS

CITY OF SEBASTOPOL,  
 COUNTY OF SONOMA,  
 STATE OF CALIFORNIA  
 APRIL 2013

